

# Extreme ATMs Dossier



Produced by the ATM Industry Association



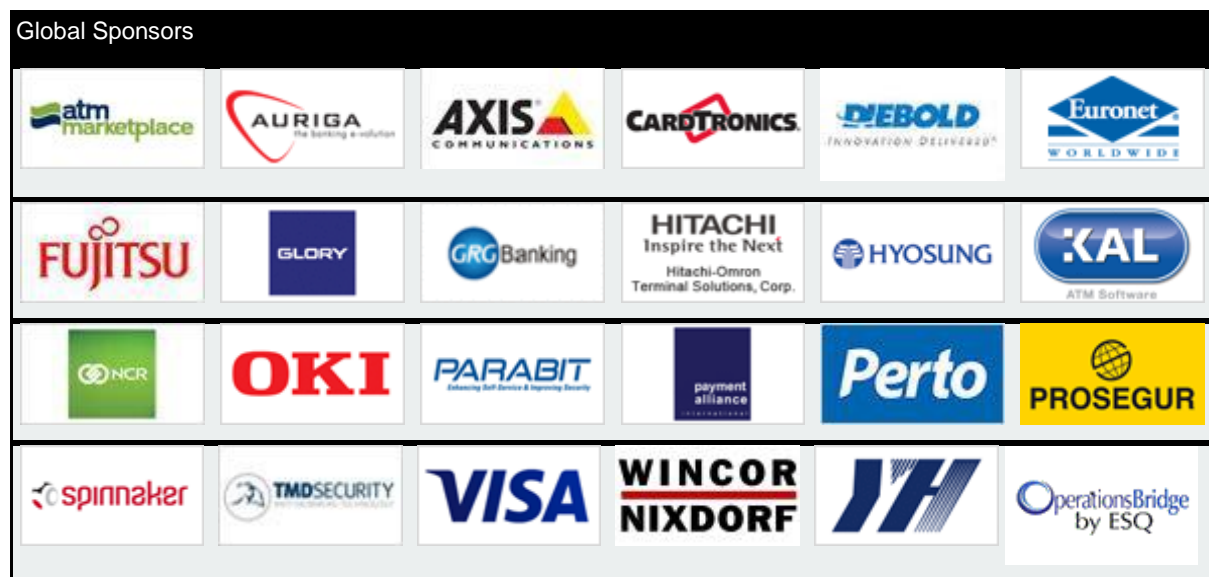
## Copyright Information

Copyright © 2016 ATMIA, All Rights Reserved.

e-mail Mike Lee, ATMIA's CEO, at [mike@atmia.com](mailto:mike@atmia.com)

## Disclaimer

The ATM Industry Association (ATMIA) publishes this *Extreme ATMs Dossier* in furtherance of its non-profit and tax-exempt purposes to share information about all types of ATMs worldwide. ATMIA has taken reasonable measures to provide objective information and recommendations to the industry but cannot guarantee the accuracy, completeness, efficacy, timeliness or other aspects of this publication. ATMIA cannot ensure compliance with the laws or regulations of any country and does not represent that the information in this publication is consistent with any particular principles, standards, or guidance of any country or entity. There is no effort or intention to create standards for any business activities. These best practices are intended to be read as recommendations only and the responsibility rests with those wishing to implement them to ensure they do so after their own independent relevant risk assessments and in accordance with their own regulatory frameworks. Further, neither ATMIA nor its officers, directors, members, employees or agents shall be liable for any loss, damage or claim with respect to any activity or practice arising from any reading of this discussion paper; all such liabilities, including direct, special, indirect or inconsequential damages, are expressly disclaimed. Information provided in this publication is "as is" without warranty of any kind, either express or implied, including but not limited to the implied warranties of merchantability, fitness for a particular purpose, or freedom from infringement. The name and marks ATM Industry Association, ATMIA and related trademarks are the property of ATMIA.



# Table of Contents

---

Foreword.....	4
Chapter 1. Extreme ATMs .....	5
1.1. THE ANTARCTIC ATM.....	5
1.2. THE ARCTIC MOOLAH MACHINES.....	6
1.3. THE DESERT ATM IN THE AUSTRALIAN OUTBACK.....	8
1.4. THE ATM EVEN HURRICANE KATRINA COULDN'T FLATTEN.....	9
1.5. THE REMOTE ALASKAN ATM .....	9
1.6. COLD-RESISTANT ATMS IN NORTHERN LAPLAND, NEAR THE NORTH POLE .....	10
1.7. THE HIGH ALTITUDE ATM IN PAKISTAN.....	11
1.8. FLYING ATM SERVICES IN REMOTE PARAGUAY .....	12
1.9. ATM AT THE FORBIDDEN CITY, CHINA.....	13
1.10. THE GOLDEN ATM .....	14
1.11. THE FOREST ATM.....	15
1.12. ATM IN CENTRAL AUSTRALIA NEAR AYERS ROCK.....	16
1.13. THE TRAILER ATMS .....	16
1.14. THE GOLF CART ATM.....	18
1.15. GREENLAND IN MINUS 35-40 DEGREE TEMPERATURES .....	18
Chapter 2. "Fun" ATMs.....	19
2.1. THE SMITH AND WESSON ATM .....	19
2.2. HORSEBACK ATM CASH WITHDRAWAL .....	19
2.3. THE BLUE ATM .....	20
2.4. THE GARAGE DOOR ATM .....	20
2.5. THE ELEPHANT ATM.....	21
2.6. THE EXTREME WRAP ATM .....	21
2.7. THE AGRICULTURAL ATM .....	22
2.8. THE PIGGY ATM .....	22
2.9. A CAKE ATM .....	23
2.10. THE PRIVACY ATMS .....	23

## Foreword

---

These Extreme ATMs were discovered as part of ATMIA's global competition to find the world's most amazing ATMs, as well as some "fun" ATMs. This initiative is part of the association's planning to celebrate the 50th anniversary of the ATM's existence in the year 2017.

We can only marvel at the growth and influence of the ATM in its first 50 years.

Back at the turn of the century, I had the privilege of meeting and interviewing the industry's most recognizable inventor, Mr. John Shepherd-Barron. He was a charming and sophisticated gentleman who played a key role in the development of the collective urge within the financial services industry to automate teller services and provide a new generation of self-service devices to make banking more convenient, thereby transcending spatial and temporal restrictions of being confined to traditional banking hours in bank branches.

Mr. Shepherd-Barron conceived of the ATM as a vending machine for cash, similar, let's say, to a chocolate vending machine.

From the first installed ATM in London in 1967, this 24x7 banking terminal has changed the world, providing an incalculable degree of convenience for countless customers all over the globe. It ranks as one of the leading, most influential inventions of the 20th century.

My hearty congratulations are extended to the resourceful ATM deployers who installed these extreme ATMs – they personify the adventurous and innovative spirit of the ATM industry at its best.

Let's have some fun as we celebrate together some amazing ATMs in the world today. The "bank branch in a box" can be found in the most unlikely of places, and is used in the most unusual of ways, as you are about to find out.

Enjoy the world's top fifteen extreme ATMs, followed by ten "fun" ATMs.

Mike Lee, CEO ATMIA

February 2016

# Chapter 1. Extreme ATMs

---

## 1.1. The Antarctic ATM

Antarctica's ATMs are located inside McMurdo Station (coordinates: 77°51'S, 166°40'E), near the South Pole. This is the frozen continent's largest community, capable of supporting up to 1,258 residents, and operates as the USA's Antarctic science facility.

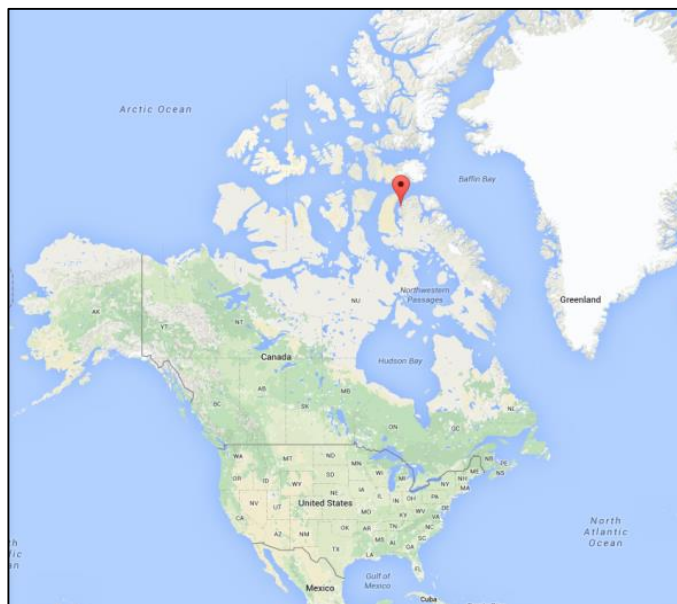


The ATMs are owned and operated by Wells Fargo Bank and are located in Building #155, which houses services such as a store, laundry, library, and galley. It is next to a dormitory. Here, then, are the Antarctica ATMs we've selected as the world's most extreme ATMs:

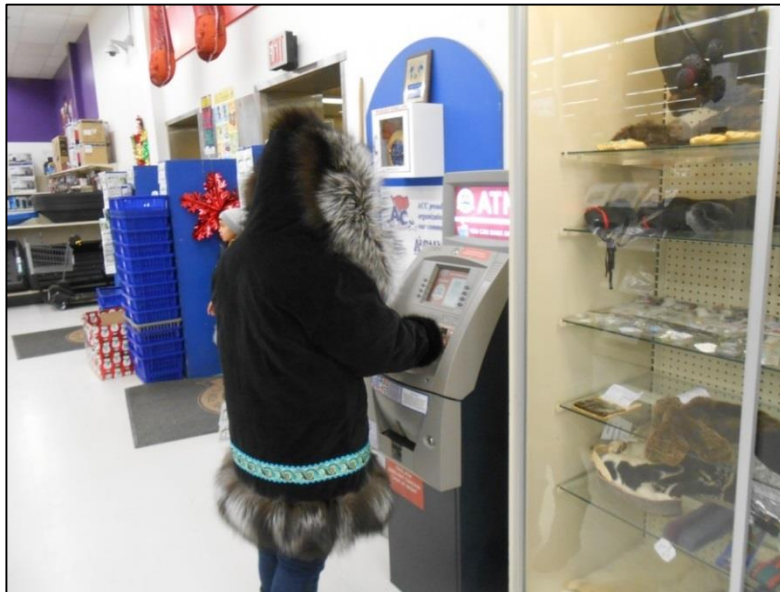
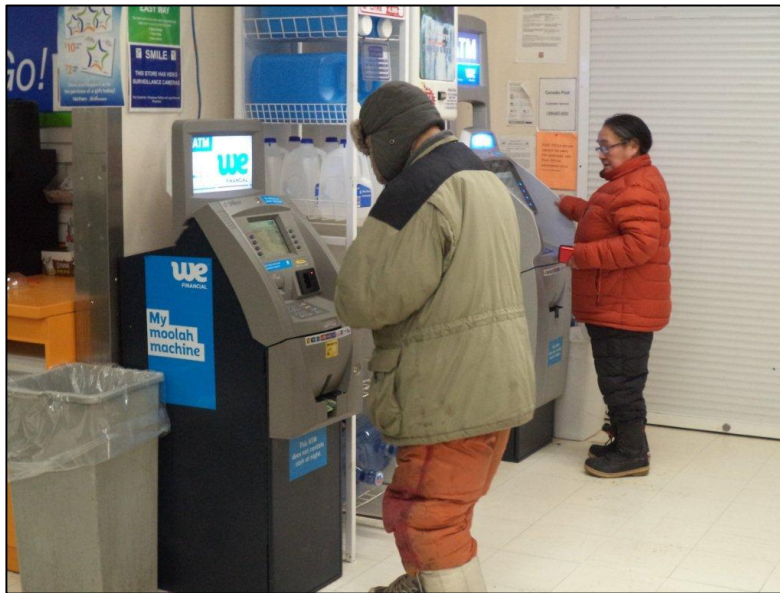


## 1.2. The Arctic Moolah Machines

Let's go to the opposite end of the world for Extreme ATM number 2. Arctic Bay is located above the Arctic Circle on Baffin Island, and has a population of approximately 800.



The North West Company operates two ATMs in the Arctic Bay.



## 1.3. The Desert ATM in the Australian Outback



The Tjuntjuntjara Aboriginal Community falls within the boundaries of the Great Victoria Desert Nature Reserve, 550 km east of Kalgoorlie Boulder, and 1,150 km from Perth, beyond the reach of any mobile services. Here in the remote desert, accessible only by Aboriginal tracks, and where Australian camels and other exotic animals can sometimes be spotted, it is not unusual for temperatures to reach 50 degrees Celsius.

A mail plane comes once a week on a Wednesday and a truck only occasionally for essential supplies.

The people who live there are known today as the Spinifex people,<sup>1</sup> traditional custodians of 55,000 square km of Spinifex native title determination area, for which permission is required to enter.

The ATM is located in the general store of the town. It completes in excess of 500 withdrawals and 200 balance inquiries per month, every month! It uses satellite communications to transact. It is now an integral part of the Tjuntjuntjara community.

<sup>1</sup> These are a group who were among people removed from their original homelands prior to the British atomic testing at the Maralinga Site (part of the Woomera Prohibited Area in South Australia) in the 1950s and 1960s.



## 1.4. The ATM Even Hurricane Katrina Couldn't Flatten



This ATM was still standing after Hurricane Katrina swept through South Mississippi. There used to be a two-story marina/convenience store around this ATM. The entire two-story building in which it was installed had been washed away. After the storm, the ATM, still standing, qualifies as an extreme installation.

## 1.5. The Remote Alaskan ATM



These ATMs are deployed in Barrow, Alaska (coordinates: 71°17'44"N, 156°45'59"W). Barrow is the northernmost city in the USA, and is located above the Arctic Circle, with a population of just over 4,000. Extremely low wind chill and white out conditions from blowing snow are very common. February is often the coldest month, averaging  $-14.2^{\circ}\text{F}$  ( $-25.7^{\circ}\text{C}$ ).

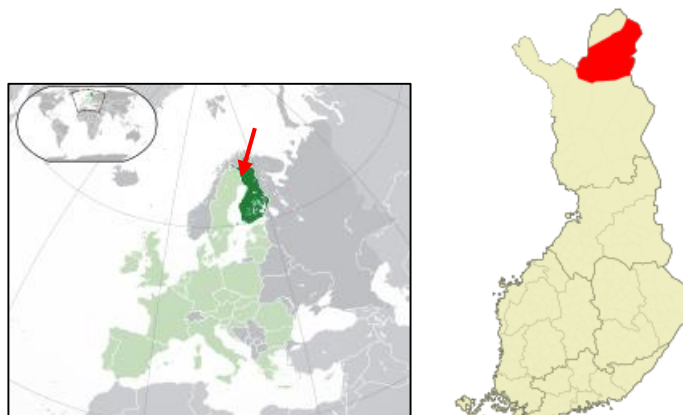


## 1.6. Cold-Resistant ATMs in Northern Lapland, Near the North Pole



The vast wildernesses of the Lapland in northernmost Finland, traditional territory of Santa Claus and the Northern Lights, is not the kind of extreme location where one expects to find ATMs. These ATMs, used by Father Christmas himself each December, have been designed with an upgrade kit to keep the cold and snow from storming in by blowing air out of the ATM.

The northernmost ATM in the whole European Union is in the village of Inari (68°54'18"N, 027°01'49"E), with a population of under 7,000.



## 1.7. The High Altitude ATM in Pakistan

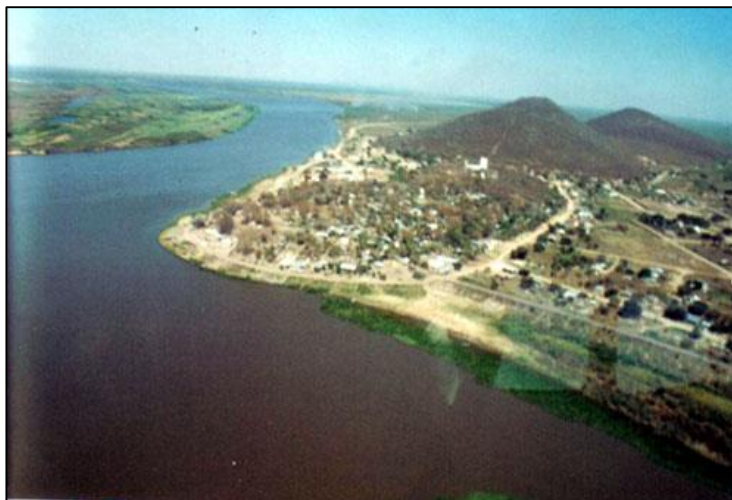
This ATM is located at 7,800 feet above sea level in sub-zero conditions in one of the remotest parts of Pakistan in Sust (or Sost). Sust is located in the upper Hunza Valley, part of the historic Silk Road. It is the last town inside Pakistan on the Karakoram Highway before the Chinese border; all traffic crossing the Pakistan-China border passes through this town. Only cold-resistant ATMs can function 24x7 in these extreme conditions.



## 1.8. Flying ATM Services in Remote Paraguay



The small town of Fuerte Olimpo, with about 5,000 inhabitants, and located 800 km from the capital of Paraguay in poorly accessible conditions, now boasts an ATM which is serviced by technicians who have to fly in for their work on one of two weekly flights available. The dirt roads leading to the town are normally used only by 4x4 pickup trucks. In rainy weather, the town frequently remains isolated. Before the ATM was installed, the villagers had to travel 300 km to use the nearest ATM.



## 1.9. ATM at the Forbidden City, China

Even places of great historical antiquity and mystery, such as the Forbidden City, in Beijing, China, are not beyond the reach of today's ATMs.



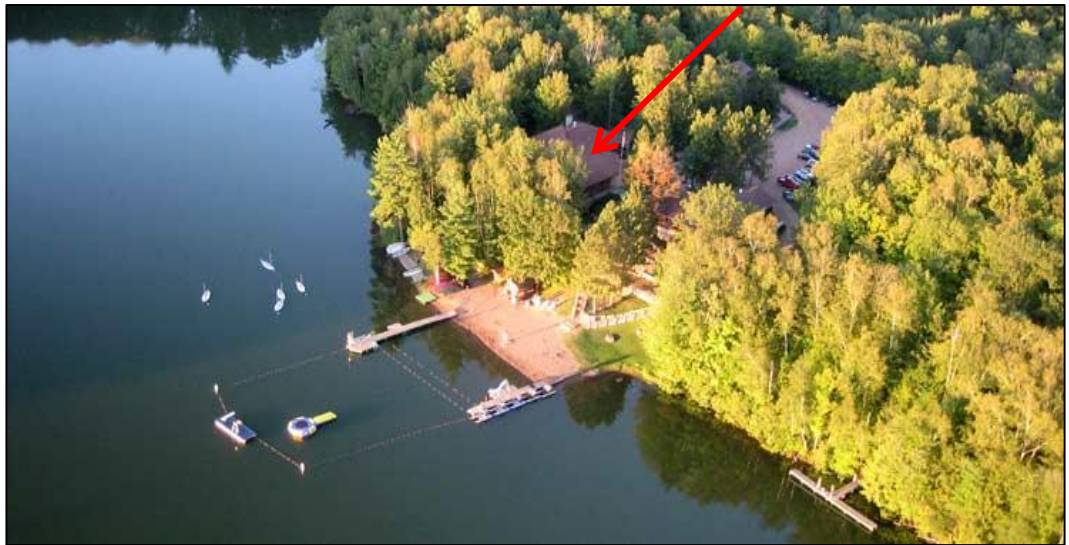
## 1.10. The Golden ATM



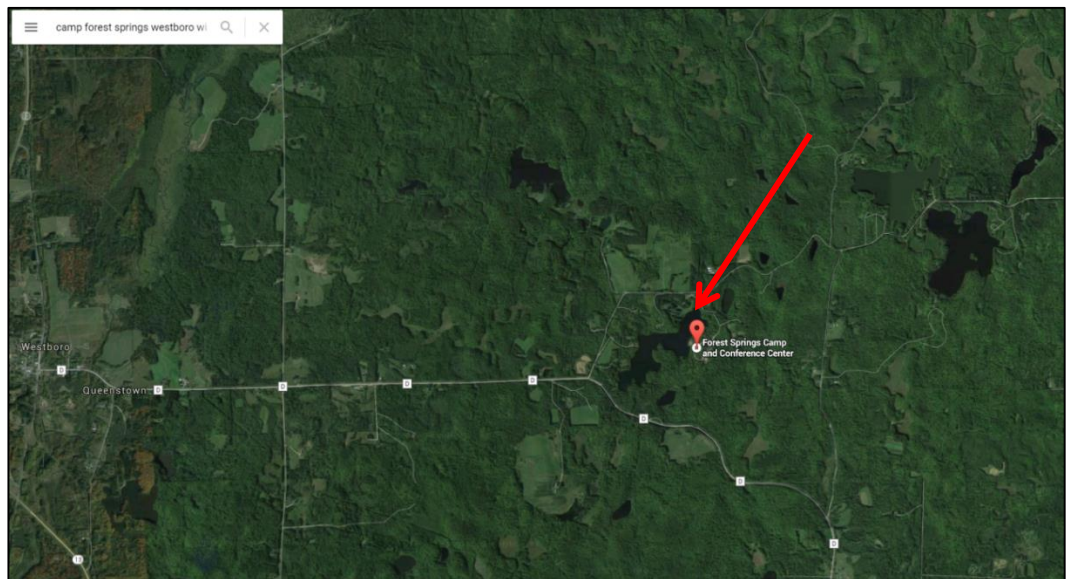
This ATM dispenses items of pure gold, including gold bars and gold coins. This one is located at the Atlantis Hotel in Dubai. The first gold-plated vending machine, located in the lobby of the Emirates Palace Hotel in Abu Dhabi, dispenses 320 items made of gold.



## 1.11. The Forest ATM

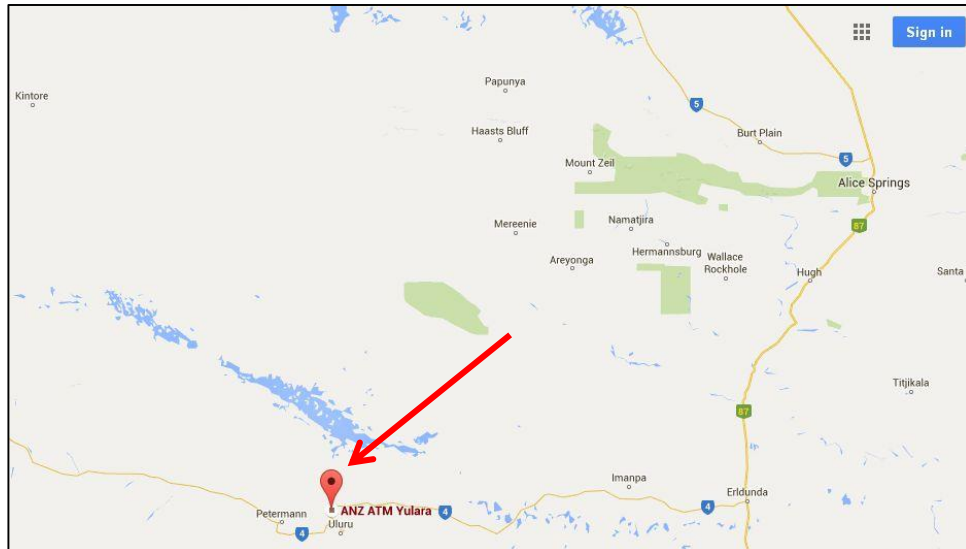


An ATM has been deployed in the midst of a large forest at a 570-acre camp site, situated along the glacial ridge of northern Wisconsin, USA. An aerial map shows the density of forest in the area.



This forest ATM allows patrons seeking the peace and tranquility of nature to enjoy modern conveniences like access to cash and other services 24x7.

## 1.12. ATM in Central Australia near Ayers Rock



ANZ Bank has placed two Smart ATMs in Yulara in Australia’s Northern Territory, 18 km by road from world heritage site Uluru (Ayers Rock). It lies 335 km (208 miles) southwest of the nearest large town, Alice Springs, 450 km (280 miles) by road. Uluru is sacred to the Anangu, the Aboriginal people of the area.

## 1.13. The Trailer ATMs

Have you ever seen eight ATMs built into a trailer which can be transported by an automobile? Here they are!







This highly mobile, easily transported set of ATMs is ideal for live events, such as concerts, sports, and carnivals.



There's nowhere ATMs cannot reach!

## 1.14. The Golf Cart ATM

This is the most original mobile ATM I've seen. It was an innovative mobile ATM event solution for the Stadion Athens Golf Classic at the University of Georgia (UGA), USA.



## 1.15. Greenland in Minus 35-40 Degree Temperatures



ATMs have been deployed in Ilulissat, a town in western Greenland, which is about 350 km (220 miles) north of the Arctic Circle. It has a population of about 4,500 with almost as many sled dogs! Ilulissat is the Kalaallisut word for "Icebergs," and the Ilulissat Icefjord is a UNESCO World Heritage Site, a major tourist attraction.

## Chapter 2. “Fun” ATMs

---

### 2.1. The Smith and Wesson ATM



These dogs are called Smith and Wesson, and they are very effective at preventing shoulder surfing and other forms of ATM fraud!

### 2.2. Horseback ATM Cash Withdrawal



Here, a cardholder accesses his cash at the ATM via horseback in a northern province of South Africa.

## 2.3. The Blue ATM

This ATM in La Gomera, an island in Spain’s Canary Islands, has been manually painted blue – for a reason known only to the owners.



## 2.4. The Garage Door ATM

This ATM was recently photographed in Venice. It was installed behind a garage door in which a hole was cut.



## 2.5. The Elephant ATM

This ATM is located inside the model of an Asian Elephant, situated at Dusit Zoo in Bangkok, Thailand. This is the most distinctive and original ATM surround I know.



## 2.6. The Extreme Wrap ATM



## 2.7. The Agricultural ATM

Even farmers sometimes need cash urgently – as this Danish dairy farmer reveals.



## 2.8. The Piggy ATM

This ATM was installed in the Wiener Prater, a large public park in Vienna, Austria.



## 2.9. A Cake ATM

Here is an ATM encased in a famous, rum-flavored Austrian cake called a Punschkrupferl. It is also located in Wiener Prater.



## 2.10. The Privacy ATMs

And, somewhere deep in the country....

