

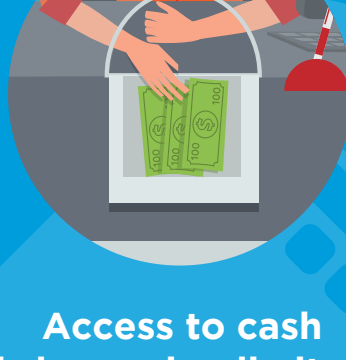
IS THE INDUSTRY PREPARED FOR NEXT GEN ATMS?

With bank branches closing, ATMs are becoming the major touchpoint with the customer and extending their features to provide replacement services. This infographic explores the potential and challenges surrounding Next Gen ATMs and how these can be addressed.

THE EVOLVING ROLE OF THE ATM



Bank branches and the number of tellers are rapidly declining



Access to cash is becoming limited especially in rural areas



There is demand for merchant services that were previously done in branch, like coin drop

NEXT GEN ATMS EMERGE

Next Gen ATMs need to be:

More secure



Offer greater flexibility



Provide a better customer experience



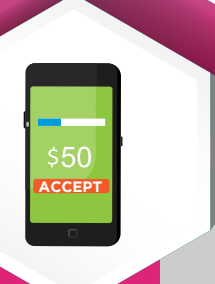
Replace bank functions as 'banks in a box'



Deliver more services than ever before



Support cardless access to cash via mobile apps



Advanced software platforms will be required to support a wider range of technologies like NFC and contactless initiated via a mobile device

HOW CAN TRADITIONAL OPERATING METHODS ADAPT?



Traditional broadband or dial deployments may be slow to install, move and/or decommission



Large estates will incur additional time and complexity, so careful planning is vital

Wireless deployments can offer:

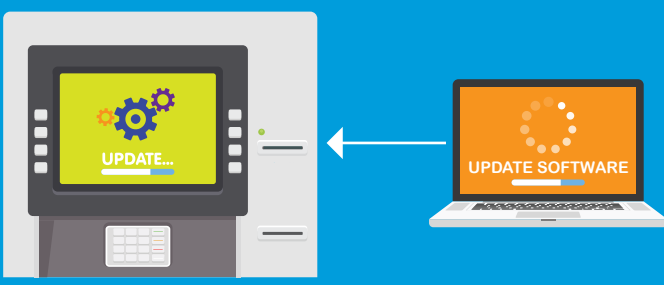


Quicker deployment and updates

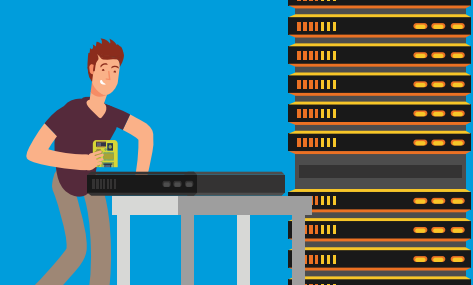


But reliable coverage must be investigated and assured

ADDRESSING THE CHALLENGE

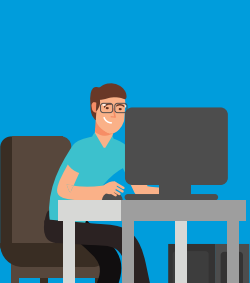


Next Gen ATMs will drive the need to support, manage and download more software to remote sites

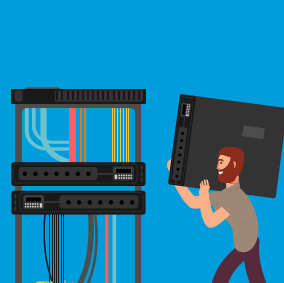


This means the quality of the infrastructure is essential

To ensure your Next Gen ATM estate can keep pace with innovation:



Consider the infrastructure early



Build resilience into your design



Include capacity to ensure flexibility as the market dictates



Ensure security is not compromised

Use a provider, like TNS, who offers:



Superior network availability, hardware performance and failover options



A highly secure end-to-end PCI DSS compliant solution



A reduced total cost of ownership of remote device connectivity



Telco independent connectivity



Simplified operations by leveraging a full suite of end-to-end managed services, covering the complete value chain from 'ordering to operations'



24x7x365 monitoring and support



Transaction Network Services

One Connection - A World of Opportunities